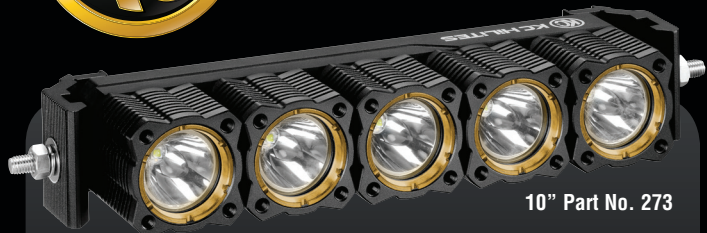




KC HiLITES

FLEX ARRAY LED Light Bars



10" Part No. 273



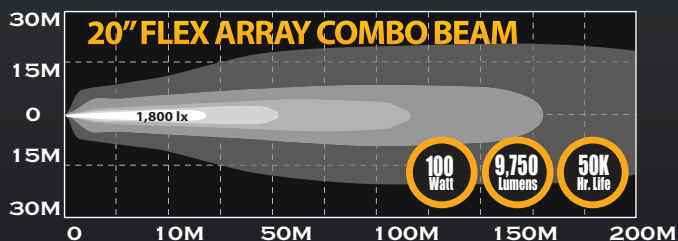
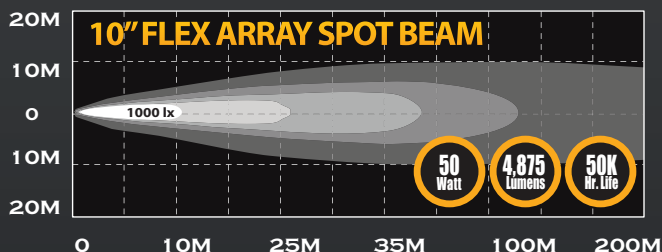
20" Part No. 274

FLEX ARRAY LED LIGHT BARS

FEATURES

- Cree XM-L2 U2 LEDs
- 5,700K Color Temperature
- 50,000 Hour LED Life
- Precision Reflector Optics
- Spot Beam Pattern on 10" Flex Array LED Light Bar
- Combo Spot / Spread Beam Pattern on 20" Flex Array LED Light Bar
- Aluminum Housings
- Operates on 9 to 18 Volts
- IP68 Rated
- Protected Against EMI Interference
- Includes Wiring Harness with Waterproof Connectors

PHOTOMETRICS



FLEX ARRAY LED LIGHT BAR DIMENSIONS



KC FLEX ARRAY LED LIGHT BARS

Part No.	Model / Description	Beam Pattern	No. of LEDs	Watts	Amps	Volts	Lumens	Dimensions		
								A	B	C
273	10" Flex Array Light Bar	Spot	5	50	5	9-18	4,875	3.25"	2.0"	11.375"
274	20" Flex Array Light Bar	Combo Spread / Spot	10	100	10	9-18	9,750	3.25"	2.0"	21.25"